



	a	b	c	d	e	f	g	r ¹	r ²
B	1100	1600	450	60	30	400	300	100	100
C	1400	2000	600	100	40	400	375	100	150

Notes:

1. This sign must be installed with the flashing light panel.
2. Where flashing lights are used they shall meet the requirements of AS2144 for 200 mm diameter signal lanterns.
3. Sign may be used on approach to a road crossing controlled by flashing lights (active control).
4. Refer page 2 for installation layout.
5. Flashing lights on this sign are to be activated with rail crossing flashing lights.
6. Refer MUTCD Part 7 and TC1747 for further details.
7. Stiffener rails used on the light panel should be "Type 1" and spaced so as not to interfere with light assembly.
8. Flashing light assembly spacing is determined by relevant post spacing (660mm for 65NB - size B) and (840mm for 90NB - size C) posts. (i.e. based on 60% of width of sign). Refer to pages 3 and 4 for TraSiS support details.

Colour Legend

- Black
- Retroreflective red
- Retroreflective yellow
- Retroreflective white



**Queensland
Government**

ADVANCE RAILWAY ACTIVE WARNING SIGN (AS1742.7 - RX-11)

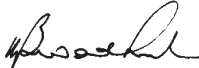
Network Operations & Road Safety Division
Traffic Engineering & Road Safety Section

APPROVED AS OFFICIAL TRAFFIC SIGN

Designed
RH 03/09

Checked
DJ 03/09

Scale
Not to Scale

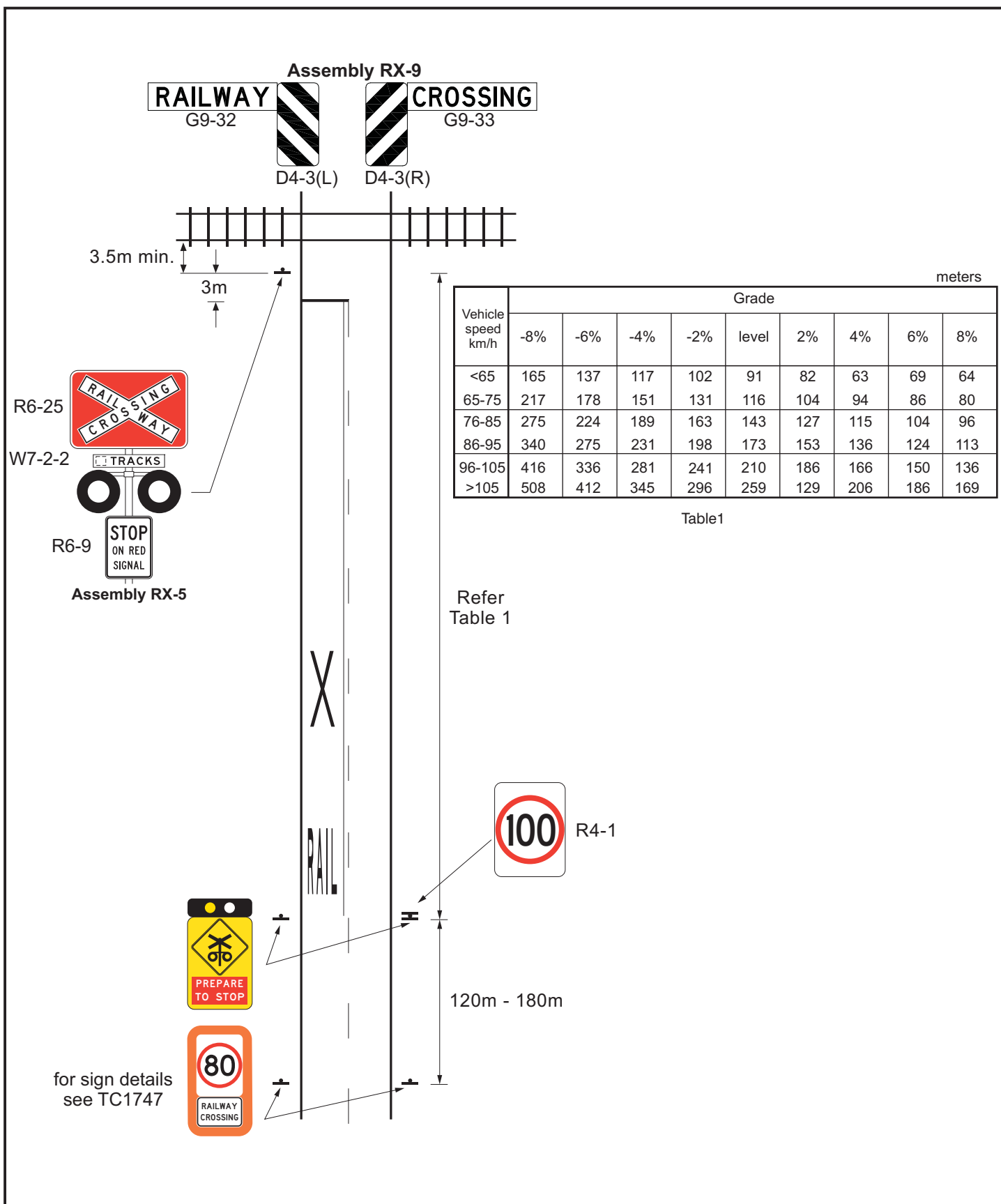

PRINCIPAL ENGINEER
(Traffic Engineering)

26/06/09
Date

TC1756

Page 1 of 4

A B



Queensland Government			LAYOUT OF ACTIVE ADVANCE WARNING SIGNS AND REDUCED SPEED LIMIT 80km/h ONLY RAILWAY CROSSING CONTROLLED BY FLASHING LIGHTS (ACTIVE CONTROL) WITH OR WITHOUT BOOM GATES		
Network Operations & Road Safety Division Traffic Engineering & Road Safety Section			APPROVED AS OFFICIAL TRAFFIC SIGN		TC1756
Designed RH 03/09	Checked DJ 03/09	Scale Not to Scale	 PRINCIPAL ENGINEER (Traffic Engineering)		26/06/09 Date
					Page 2 of 4
					<div style="display: flex; justify-content: space-around;"> A B </div>

Job : Emergency

Section : Prepare to

Sign Pos : 2

Location Details

Wind Region
Exposed Terrain
Risk Category
Foundation Soil
Side of Road
Distance from carriageway
Road Height

Region C
No
Low Impact Risk
Firm to Stiff Clay Soil
Left
1000
1500

Slope Details

Segment	Length	Height
1	5000	0

Sign Face Details

Detail	Front Lower	Front Upper
Sign Code	11	12
Sign Width	1100	1100
Sign Depth	1600	400
Legend Class	Various	Various
Legend Colour	Various	Various
Background Class	Various	Various
Background Colour	Yellow	Brown
Sign Separation	0	0

Sign Stiffener Details

Detail	Front Lower	Front Upper
Stiffener Type	1	1
Number of Stiffeners	5	2
Stiffener Spacing	385	350
Number of Brackets	10	4

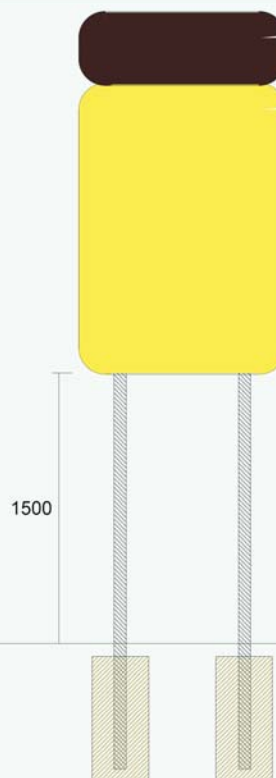
CHS Steel Design Details

Support Details

Number 2
Spacing 660, Standard
Kerb Post Length 4200
Post 2 Length 4200
Post 3 Length 0
Post 4 Length 0
Stub Length 0
Post Dimensions 65 NB
Post Wall Thickness 3.2
Post Grade C350
Slip Base Required No

Footings Details

Diameter of Hole 300
Depth of Hole 700



Queensland
Government

TRASIS SIGN SUPPORT DESIGN FOR SIZE "B" SIGNS

Network Operations & Road Safety Division
Traffic Engineering & Road Safety Section

APPROVED AS OFFICIAL TRAFFIC SIGN

26/06/09
Date

TC1756

Page 3 of 4

Designed
TV 06/09

Checked
DJ 06/09

Scale
Not to Scale

[Signature]
PRINCIPAL ENGINEER
(Traffic Engineering)

A ☐ ☐ ☐ ☐ ☐

Job : Emergency

Section : Prepare to

Sign Pos : 1

Location Details

Wind Region	Region C
Exposed Terrain	No
Risk Category	Low Impact Risk
Foundation Soil	Firm to Stiff Clay Soil
Side of Road	Left
Distance from carriageway	1000
Road Height	1500

Slope Details

<u>Segment</u>	<u>Length</u>	<u>Height</u>
1	5000	0

Sign Face Details

<u>Detail</u>	<u>Front Lower</u>	<u>Front Upper</u>
Sign Code	11	12
Sign Width	1400	1400
Sign Depth	2000	400
Legend Class	Various	Various
Legend Colour	Various	Various
Background Class	Various	Various
Background Colour	Yellow	Brown
Sign Separation	0	0

Sign Stiffener Details

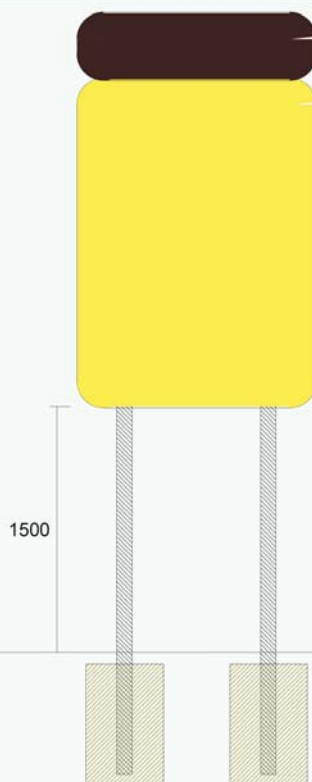
<u>Detail</u>	<u>Front Lower</u>	<u>Front Upper</u>
Stiffener Type	1	1
Number of Stiffeners	5	2
Stiffener Spacing	450	350
Number of Brackets	10	4

CHS Steel Design DetailsSupport Details

Number	2
Spacing	840, Standard
Kerb Post Length	4650
Post 2 Length	4650
Post 3 Length	0
Post 4 Length	0
Stub Length	0
Post Dimensions	90 NB
Post Wall Thickness	3.2
Post Grade	C350
Slip Base Required	No

Footings Details

Diameter of Hole	450
Depth of Hole	750



Queensland
Government

TRASIS SIGN SUPPORT DESIGN FOR SIZE "C" SIGNS

Network Operations & Road Safety Division
Traffic Engineering & Road Safety Section

APPROVED AS OFFICIAL TRAFFIC SIGN

26/06/09
Date

TC1756

Page 4 of 4

Designed
TV 06/09

Checked
DJ 06/09

Scale
Not to Scale

[Signature]
PRINCIPAL ENGINEER
(Traffic Engineering)

A ☐ ☐ ☐ ☐ ☐